

PATIENT INFO:

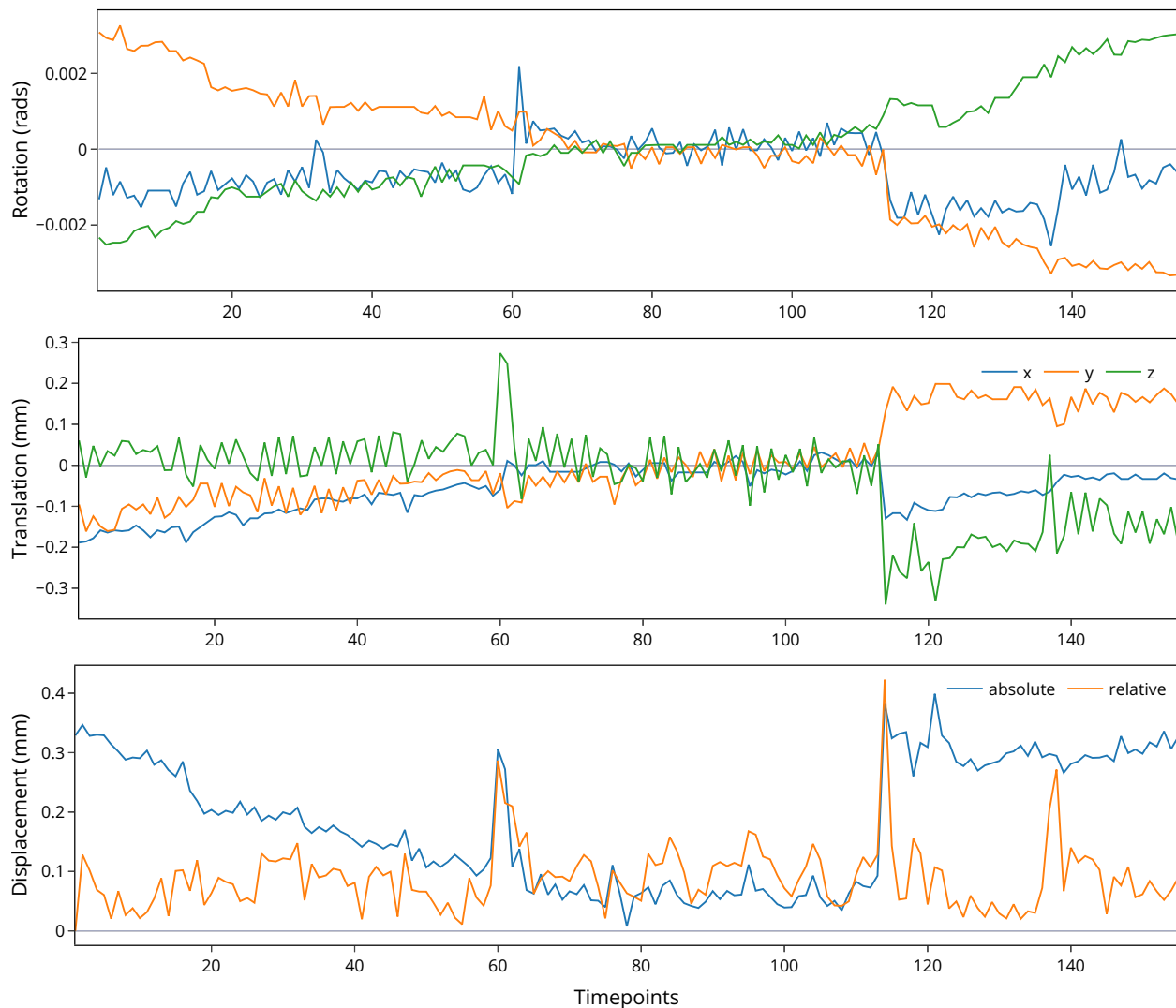
Exam ID: 0000000

Name: Alex_test2

DOB: 19900101

Max Absolute = 0.4 (Ref: ≤ 0.95) | **Max Relative = 0.42** (Ref: ≤ 0.72) | **Quality Index = 10.58** (Ref: ≤ 16.4)**Automated Report:**

This is an automated report summarizing the motion parameters and quality index obtained using the GraphICA software to analyze resting state fMRI data. This report was created on July 27, 2022.

Motion Parameters:

Motion parameters are condensed into a single vector referred to as root mean squared displacement (in mm), which summarizes cumulative motion in terms of absolute and relative measures. Absolute displacement (blue) describes motion in a given volume with respect to a reference time point (i.e., middle volume in time-series), providing information on gradual shifts in head position over time. Relative displacement (orange) at a given volume describes motion with respect to the subsequent time point, useful for identifying abrupt changes in head position. Quality Index is calculated by: $2000 * (\text{Max Absolute} + \text{Max Relative}) / \text{Timepoints}$.